



Case Study

Lutetium 177 PSMA Therapy as the first line of treatment for Metastatic Prostate Carcinoma



PATIENT ONCOLOGY HISTORY

Age: 77-Year-Old Male

Diagnosis: Metastatic Prostate Carcinoma.

Previous Treatments: The patient has not received any previous treatments.

Clinical Assessment before treatment procedure: Left leg weakness and left hip pain with some muscle wasting in the arms and legs.

TREATMENT PROCEDURES

The patient was counseled regarding his extensive metastatic disease, including possible bone marrow involvement with the risk of relatively poorer outcomes in view of the disease's extent. The treatment options, potential benefits of 177 Lu PSMA therapy of tumor control and pain relief, complications and side effects including possible bone marrow suppression potentially requiring multiple Packed RBC or platelet transfusions, GCSF injections, and hospital or ICU admissions and in rare cases life-threatening neutropenia and thrombocytopenia were explained to the patient. The potential adverse effects of a dry mouth were also discussed.

Infusion: Lutetium PSMA Therapy

The patient received Two doses of 177Lu DKFZ-PSMA-617 at an interval of 08 week by slow intravenous infusion using renal protection protocol (Hydration with intravenous normal saline).

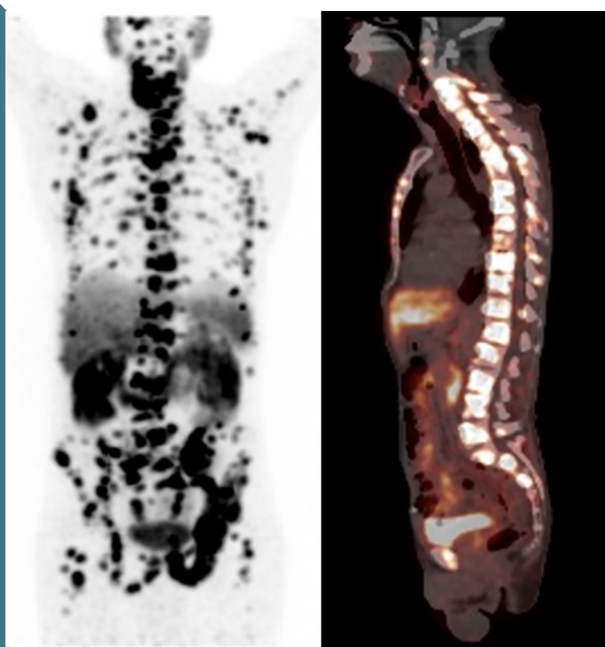
Clinical Assessment: The patients PSA levels dropped significantly and the PSMA PET CT scan done for treatment response assessment demonstrated a good partial response with a significant reduction in PSMA uptake in most of the lesions.

The patient reported that left shoulder & left hip pain is significantly reduced. The patient has no complaints of dry mouth or any other side effects. His appetite and overall general condition have improved.



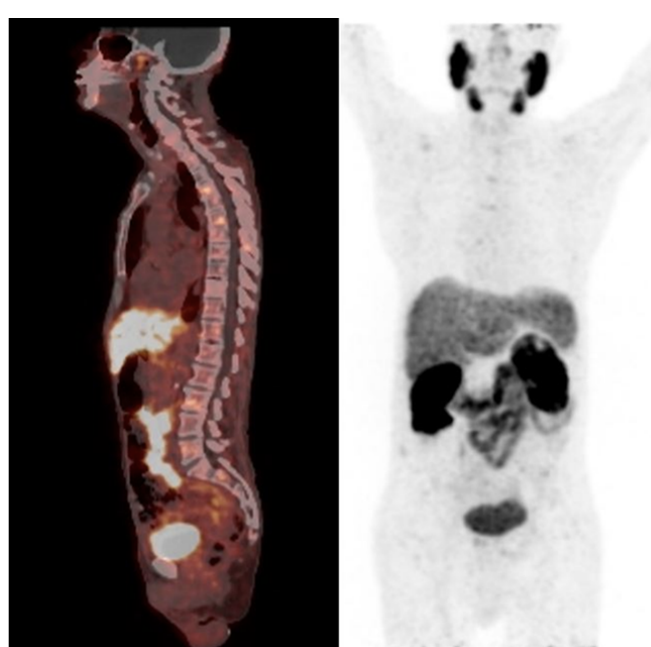
Before

Pre-therapy PSMA PET scan
PSA levels >2000ng/ml
Apr.02,2022



After

Post 02 cycle of Lu-177 PSMA therapy.
PSA levels 10.2 ng/ml
Jul. 08,2022



Discuss your case with

Dr. Ishita B. Sen

and get a second opinion



+91 98111 27080

Useful Links

- > [About Lu 177 PSMA Therapy](#)
- > [About Lu 177 PRRT Therapy](#)
- > [About Ac 225 PSMA Therapy](#)
- > [About Ac 225 PRRT Therapy](#)
- > [Metastasis directed Lu-177 PSMA Therapy in Prostate Cancer Patients with Oligometastatic Disease](#)

**This is a general information, and is not intended to substitute for medical advice.*